

## Readme file for I.S. WIZARD Rev. 3.1.1



**R. STAHL Schaltgeräte GmbH**

Technical Support: [support.instrumentation@stahl.de](mailto:support.instrumentation@stahl.de) +49 (0)7942-943 4123

24.06.2008

### Installation:

1. If you have installed a older revision of I.S. Wizard uninstall this revision first.
2. Install the I.S. Wizard software executing 'SETUP.EXE'.
3. Start I.S. Wizard and select the language 'german' or 'english' in the menu 'Extras'. If the language is changed, please exit I.S. Wizard and restart the Software again to enable all functions in the new language.

I.S. Wizard is ready to use now. The software is running as demo version and supports full functionality but with maximum 6 I/O modules.

To support bigger number of modules you need a licence which is delivered as Keynumber which can be entered in your existing software version to enable full functionality.

Please use online Help functions to get more information's about the program and it's handling. Press F1 key to get specific information's of the actual window of I.S. Wizard.

# IS1 Remote I/O System

## Release Notes:

I.S. Wizard Release	Extensions
2.2.0 and older	First Beta Releases. Not all functions supported.
2.2.1	<p><b>first official release supporting following additional features:</b></p> <ul style="list-style-type: none"> <li>- German and english language support</li> <li>- Online Help</li> <li>- Print function for module labels</li> </ul> <p><b>Attention !</b> Project files of older revisions (Rev 2.20 and older) can not be used with this new revision of I.S. Wizard. Please create new project files.</p>
2.2.4	<ul style="list-style-type: none"> <li>- Import / Export function for signal data (TAG No., signal comment, analog scaling, HART address)</li> <li>- Function Labelprint: Selective printout of individual module labels</li> <li>- New parameter and CPM diagnoses for the function 'Line redundancy'</li> <li>- New CPM parameter 'IOM 9-16 on rail X4: Yes/No'</li> </ul>
2.2.5	<p><b>New I/O-modules in hardware data base:</b></p> <p>9475/22-08-51 <b>DOM</b> 8 OD Exi2 (OD=Output disable)            9475/22-08-61 <b>DOM</b> 8 OD Exi3            9477/12-08-12 <b>DOM</b> 8 60V Rel Z1            9477/12-06-12 <b>DOM</b> 6 250VRel Z1</p> <p><b>MODBUS Redundancy:</b> Redundant operation of two CPM in one Fieldstation supported. (see operating instructions IS1 MODBUS chapter 3.4.4 'Transmit configuration and parameter data to redundant CPM')</p> <p><b>Language Support:</b> Support of french screenmasks.</p>
2.2.5 SP1	<p><b>New Parameter for TIM 8 mV 9481/.. : Thermocouple Typ XK(L)</b> (required: 9481 modul FW-Rev. 01-01)</p>
2.2.5 SP2	<p><b>New I/O-modules in hardware data base:</b></p> <p>9475/22-04-21 DOM 4 OD Exi2</p> <p>New print files (.WMF) for module labels for modules: 9475/22-04-21, 9475/22-08-51, and 9475/22-08-61</p>
2.2.5 SP3	<p><b>New CPM in hardware data base:</b></p> <p>9440/22-01-21 <b>CPM</b> 230V Zone 1</p>
2.2.5 SP4	<p><b>Modules HART-Variable supported:</b></p> <p>AIMH 9461/12-08-x1, AOMH 9466/12-08-11</p>

## IS1 Remote I/O System

I.S. Wizard Release	Extensions
2.2.5 SP5	<b>Module 9480 TIM8 R:</b> Bugfix for Parameter 'Input Filter = Off'
3.0.0	Support of: standard- and extended Parameterset of the IS1 remote I/O-system communication of HART variables on PROFIBUS DP or MODBUS  <b>New CPM in hardware data base:</b> 9440/22-01-11 CPM Zone1 24V PNO
3.1.0	Database allocation error using several COM-Ports simultaneously removed.
3.1.0 SP1	<b>New I/O-modules in hardware data base:</b> 9470/25-16-12 DIM16 + Stat, DIM16 + Stat+CF 9461/15-08-12 AIM 8, AIM 8+4HV, AIM 8+8HV 9466/15-08-12 AOM 8, AOM 8+4HV, AOM 8+8HV  <b>New print files (.WMF) for module labels with IECEx approval:</b> All CPM's and modules  <b>Modbus RTU function addon (CPM Firmware ≥ 11-08 or 10-04B):</b> CPM Start Condition via control register
3.1.0 SP2	<b>New Parameter for TIMR 8 9480/12-08-11:</b> <b>PT100 GOST GOCT 6651-94 (-200°C... +1100°C)</b> <b>M50 GOST 6651-94 (-200°C... +200°C)</b> <b>M100 GOST 6651-94 (-200°C... +200°C)</b> (required: 9480 module Firmware Rev. 02-04)  <b>New CPM in hardware data base:</b> 9441/12-00-10 CPM Ethernet Zone1 24V  <b>New print files (.WMF) for module labels for modules:</b> 9470/25-16-12, 9461/15-08-12 and 9466/15-08-12
3.1.0 SP3	<b>New Parameter for CPM 9440/12-01-11: Line Redundancy</b> ( required: 9440/12-01-11 CPM Firmware Rev. 01-35 or 02-35 and CPM Hardware Rev. J )
3.1.1	Communication problems on Service bus using Com ports with larger data buffers removed.  COM 10 – COM12 supported  <b>New I/O-modules in hardware data base:</b> 9462/12-06-11 SAIMH 9462/12-08-11 SAIMH

## Known Problems:

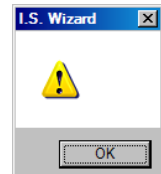
### Windows Vista (all Versions)

When the Help function of the I.S. Wizard is called, a message box is shown. Actually all "HELP" functions of the I.S. Wizard are not working on Windows Vista installations, due to the missing and old 16bit Help-engine (WinHlp32.exe).

The following link leads to the Microsoft Support Page:

english <http://support.microsoft.com/kb/917607/en-us>

german <http://support.microsoft.com/kb/917607/de>



## Support address

### R. Stahl Schaltgeräte GmbH

Center of Competence Instrumentation Systems

eMail: [support.instrumentation@stahl.de](mailto:support.instrumentation@stahl.de)

Support information: <http://www.stahl.de>

Service hotline IS1: +49 (7942) 943-4123

Telefax : +49 (7942) 943-40 4123