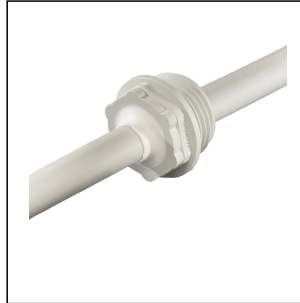
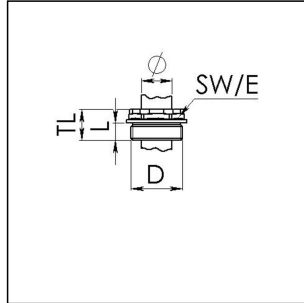


## EMS 16

Membrane screw, plastic, RAL 7035, M16



Products may differ in size, colour and appearance to those shown. If you require further information or customisation, please contact us directly.



<b>Material</b>	Polypropylene
<b>Material membrane</b>	TPE
<b>Temp. range min</b>	-30 °C
<b>Temp. range max</b>	80 °C
<b>Glow wire test</b>	750 °C
<b>Protection class</b>	IP66
<b>Thread type</b>	M
<b>Ø Connection thread D</b>	16
<b>Lead</b>	1,5
<b>Length screw-in thread L</b>	9 mm
<b>Ø cable diameter min</b>	1 mm
<b>Ø cable diameter max</b>	9 mm
<b>Key width SW</b>	17 mm
<b>Collar diameter (E)</b>	20 mm
<b>Total length TL</b>	15 mm
<b>Installation torques</b>	1,5 N m
<b>Product Color</b>	RAL 7035
<b>Order no. RAL 7035</b>	10062567
<b>Type</b>	EMS 16
<b>Packing unit</b>	100
<b>ETIM-Classification</b>	EC000451

### Recommended accessories

Your Contact:

**WISKA Hoppmann GmbH**

Kisdorfer Weg 28 · 24568 Kaltenkirchen · Germany

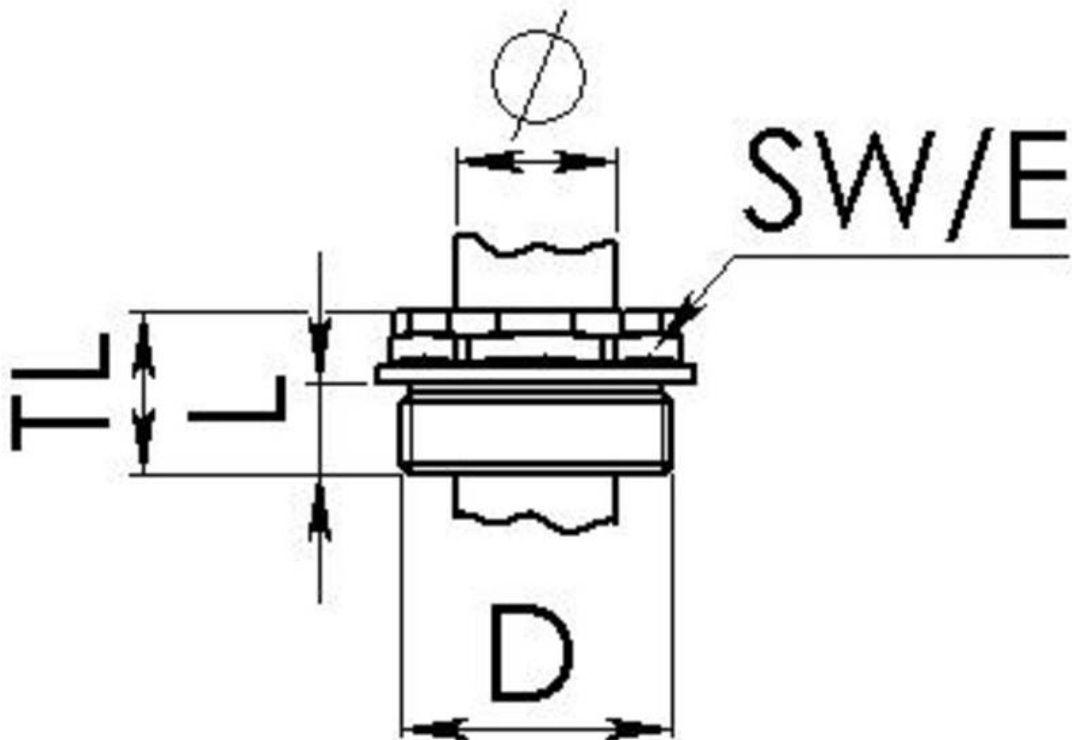
☎ +49-4191-508-0 · 📠 +49-4191-508-209

contact@wiska.de · www.wiska.com

<b>EMUG 16</b>	10060771
<b>EADR 16</b>	10062802

05.12.2019

Your Contact:  
**WISKA Hoppmann GmbH**  
Kisdorfer Weg 28 · 24568 Kaltenkirchen · Germany  
☎ +49-4191-508-0 · 📠 +49-4191-508-209  
contact@wiska.de · www.wiska.com



Your Contact:

**WISKA Hoppmann GmbH**

Kisdorfer Weg 28 · 24568 Kaltenkirchen · Germany

☎ +49-4191-508-0 · 📠 +49-4191-508-209

contact@wiska.de · www.wiska.com