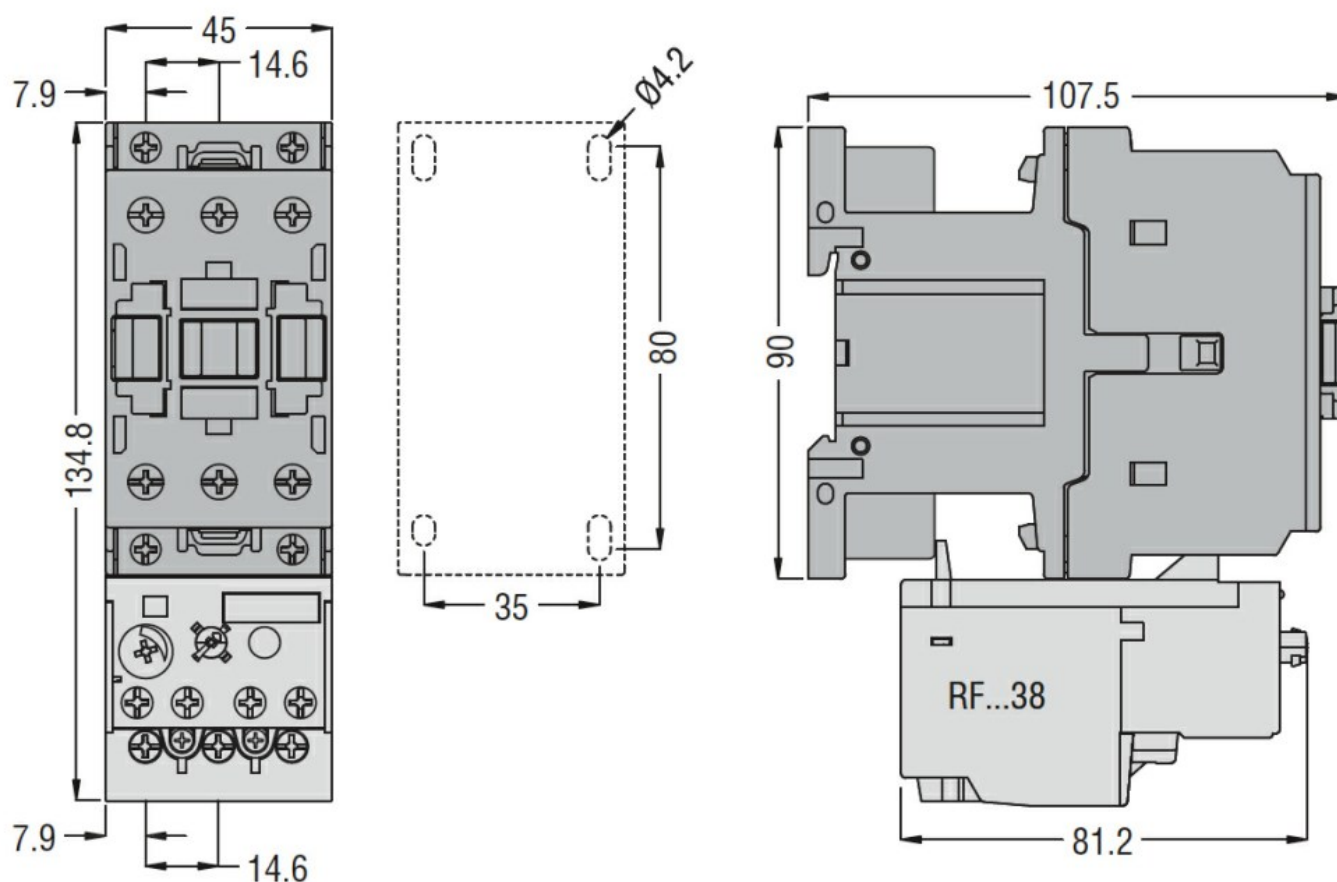




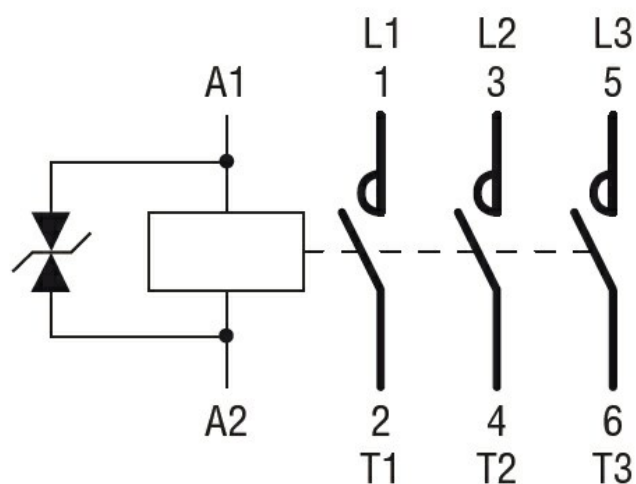
Product designation			Power contactor
Product type designation			BF32
Contact characteristics			
Number of poles		nr.	3
Rated insulation voltage Ui IEC/EN		V	690
Rated impulse withstand voltage Uimp		kV	6
Operational frequency	min	Hz	25
	max	Hz	400
Conventional free air thermal current Ith IEC/EN		A	56
Operational current Ie	AC-1 (≤40°C)	A	56
	AC-3 (≤440V ≤55°C)	A	32
	AC-4 (400V)	A	13.5
Rated operational power AC-1 (T≤40°C)	230V	kW	21
	400V	kW	36
	500V	kW	45
	690V	kW	62
Rated operational power AC-3 (T≤55°C)	230V	kW	8.8
	400V	kW	16
	415V	kW	17
	440V	kW	17
	500V	kW	20
	690V	kW	22
Short-time allowable current for 10s (IEC/EN60947-1)		A	320
Protection fuse	gG (IEC)	A	63
	aM (IEC)	A	32
Making capacity (RMS value)		A	320
Breaking capacity at voltage	440V	A	256
	500V	A	240
	690V	A	192
Resistance per pole (average value)		mΩ	2
Power dissipation per pole (average value)	Ith	W	6
	AC3	W	2
Tightening torque for terminals	min	Nm	2.5
	max	Nm	3
	min	Ibin	1.8
	max	Ibin	2.2
Tightening torque for coil terminal			

	min	Nm	0.8
	max	Nm	1
	min	lbft	0.8
	max	lbft	0.74
Max number of wires simultaneously connectable	nr.		2
Conductor section			
AWG			
	/kcmil min		14
	/kcmil max		6
Flexible w/o lug conductor section			
	min	mm ²	2.5
	max	mm ²	16
Flexible c/w lug conductor section			
	min	mm ²	1
	max	mm ²	10
Flexible with insulated spade lug conductor section			
	min	mm ²	1
	max	mm ²	10
Power terminal protection according to IEC/EN 60529			IP20 when wired
Auxiliary contact characteristics			
Operational current I _e AC-1 (≤40°C)		A	56
Operating current DC13			
	110V	A	Screw / DIN rail 35mm
Ambient conditions			
Temperature			
Operating temperature			
	min	°C	-50
	max	°C	70
Storage temperature			
	min	°C	-60
	max	°C	80
Max altitude		m	3000
Operational position			
	Operating position normal		vertical plan
	Operating position allowable		±30°
Fixing			Screw / DIN rail 35mm
Weight		g	0.554
Operations			
Mechanical life		Cycles	20000000
Electrical life		Cycles	1600000
Safety related data			
Performance level B10d according to EN/ISO 13489-1			
	rated load	Cicli	1600000
	mechanical load	Cicli	20000000
Mirror contacts according to IEC/EN 60947-4-1			yes
EMC compatibility			yes
DC coil operating			
DC rated control voltage			
	min	V	6
DC operating voltage			
pick-up			

		min	%Us	0.7
		max	%Us	1.25
drop-out				
		min	%Us	0.1
		max	%Us	0.40
Average coil consumption $\leq 20^{\circ}\text{C}$				
Average coil consumption $\leq 20^{\circ}\text{C}$ in-rush			W	5.4
Average coil consumption $\leq 20^{\circ}\text{C}$ holding			W	5.4
Max cycles frequency				
Mechanical operations			Cycles/h	3600
Operating times				
Average time for Us control				
in AC				
Closing NO				
		min	ms	8
		max	ms	24
Opening NO				
		min	ms	5
		max	ms	15
in DC				
Closing NO				
		min	ms	54
		max	ms	66
Opening NO				
		min	ms	14
		max	ms	17
UL technical data				
Full-load current (FLA) for three-phase AC motor				
		at 480V	A	27
		at 600V	A	27
Yielded mechanical performance for				
for single-phase AC motor				
Yielded mechanical performance 110/120V			hp	3
Yielded mechanical performance 230V			hp	7.5
for three-phase AC motor				
Yielded mechanical performance 200/208V			hp	10
Yielded mechanical performance 220/230V			hp	10
Yielded mechanical performance 460/480V			hp	20
Yielded mechanical performance 575/600V			hp	25
General USE				
Contactor				
			AC current	A 32
Other features				
Pollution degree				3
Dimensions				



Wiring diagrams



Certifications and compliance

Certifications

CSA C22.2 n° 60947-1
CSA C22.2 n° 60947-4-1
IEC/EN 60947-1
IEC/EN 60947-4-1
UL 60947-1
UL 60947-4-1

Compliance

CCC

cULus

EAC

ETIM 6 classification

EC000066 - Power contactor, AC switching