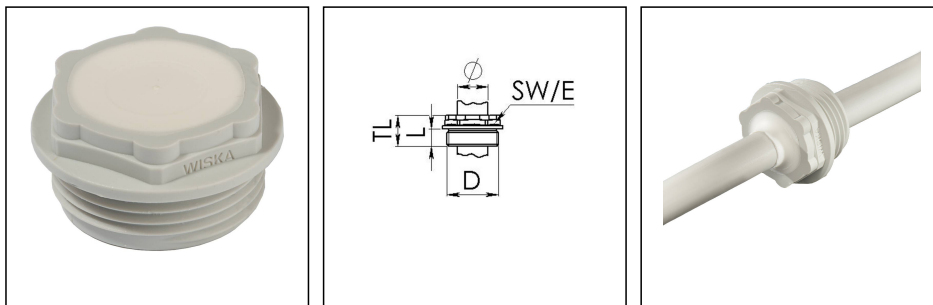


EMS 32

Membrane screw, plastic, RAL 7035, M32



Products may differ in size, colour and appearance to those shown. If you require further information or customisation, please contact us directly.



Material	Polypropylene
Material membrane	TPE
Temp. range min	-30 °C
Temp. range max	80 °C
Glow wire test	750 °C
Protection class	IP66
Thread type	M
Ø Connection thread D	32
Lead	1,5
Length screw-in thread L	9 mm
Ø cable diameter min	1 mm
Ø cable diameter max	25 mm
Key width SW	32 mm
Collar diameter (E)	36 mm
Total length TL	15 mm
Installation torques	3 N m
Product Color	RAL 7035
Order no. RAL 7035	10062570
Type	EMS 32
Packing unit	100
ETIM-Classification	EC000451

Recommended accessories

Your Contact:

WISKA Hoppmann GmbH

Kisdorfer Weg 28 · 24568 Kaltenkirchen · Germany

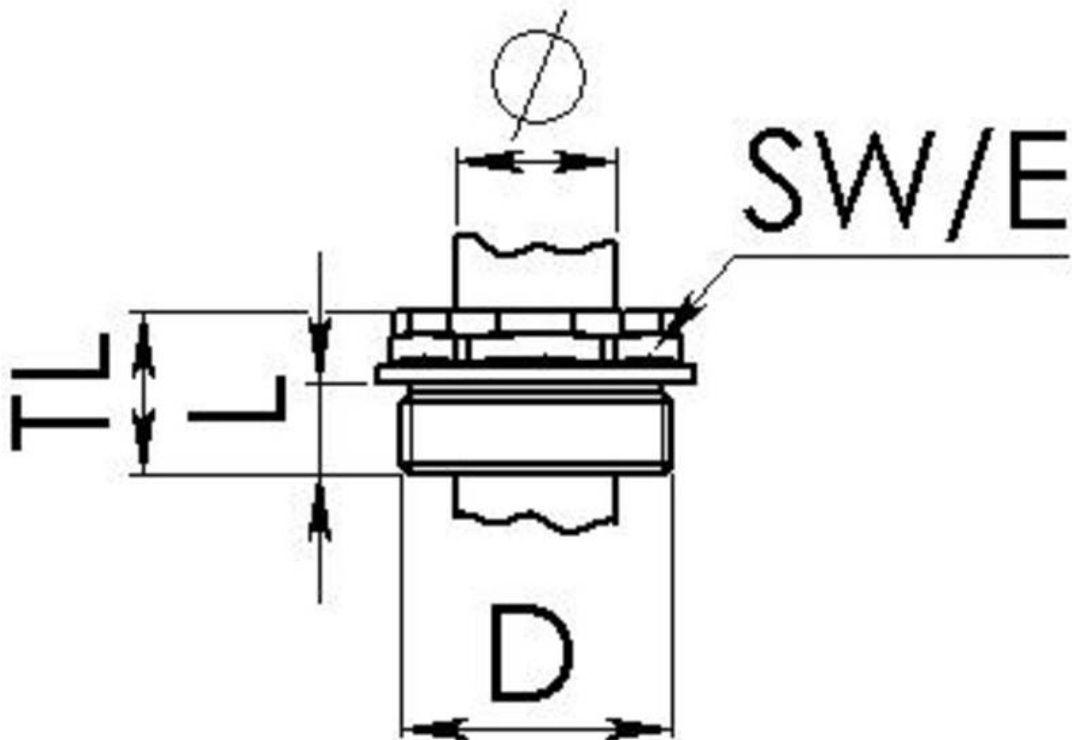
☎ +49-4191-508-0 · 📠 +49-4191-508-209

contact@wiska.de · www.wiska.com

EMUG 32	10060774
EADR 32	10062805

06.12.2019

Your Contact:
WISKA Hoppmann GmbH
Kisdorfer Weg 28 · 24568 Kaltenkirchen · Germany
☎ +49-4191-508-0 · 📠 +49-4191-508-209
contact@wiska.de · www.wiska.com



Your Contact:

WISKA Hoppmann GmbH

Kisdorfer Weg 28 · 24568 Kaltenkirchen · Germany

☎ +49-4191-508-0 · 📠 +49-4191-508-209

contact@wiska.de · www.wiska.com